



YOUTH METAL
DETECTOR

CYCLONE™



WGI INNOVATIONS, LTD
602 Fountain Parkway
Grand Prairie, TX 75050
800.847.8269

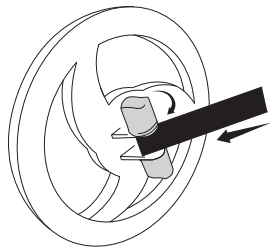


"Ground EFX" and "Cyclone" are TM trademarks of WGI Innovations, LTD.
"Sport Responsible" is a TM trademark of WGI Innovations, LTD.



User's Manual

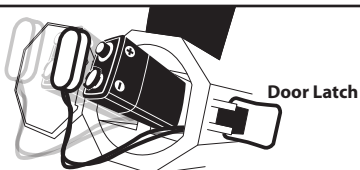
Model # MC1



Assembly

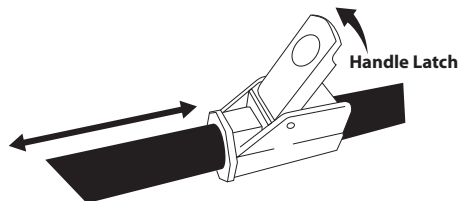
Remove the plastic bolts on the top of the coil. Fit the rod inside the bracket on the coil. Insert the plastic bolts into the bracket and through the bottom rod. Then tighten but do not over tighten.

Battery Connectors



Installing Batteries

Open the battery door by undoing the door latch. Place the 9V batteries in the compartment and attach the connectors to the batteries. Latch the door closed. Do not use Heavy Duty batteries or Zinc-Carbon batteries. Do not mix old and new batteries.



Adjusting Length

Lift the handle latch located on the tube. Extend the tube to the desired length. Lock the handle latch back into place to secure.



Turn ON

Rotate left knob to click power to the unit



Adjust Sensitivity

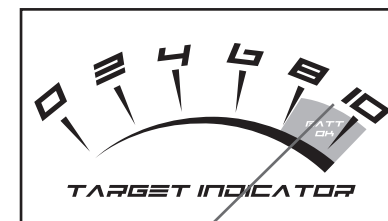
Rotate left knob clockwise to increase sensitivity

(Reduce sensitivity if the detector emits false signals; the detector is probably reacting to electromagnetic interference for the soil)



Battery Test

To test battery, rotate right knob counter-clockwise until it clicks while the unit is powered ON. The needle on the Target Indicator should move to BATT OK.



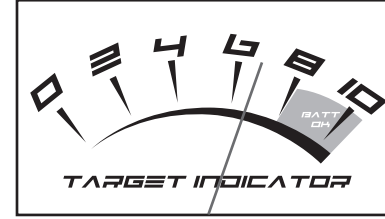
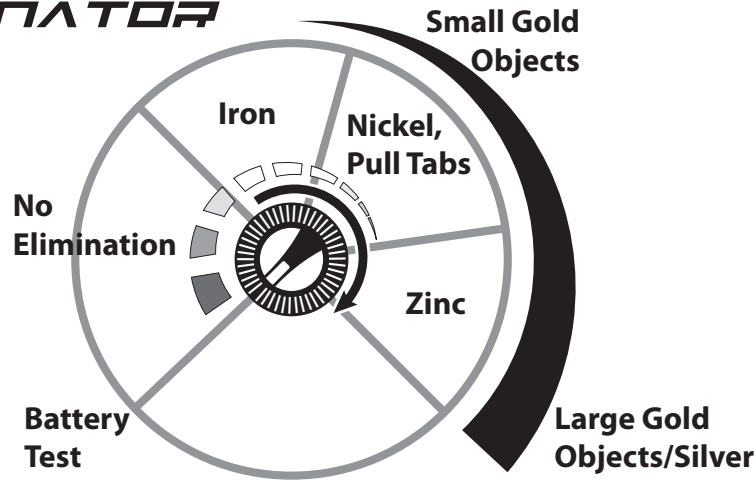


Eliminator

Rotate right knob clockwise to eliminate unwanted metals from detection. As the right knob is turned clockwise, metals are progressively being eliminated from detection. Refer to the scale for the relative positions at which different types of metal are eliminated.

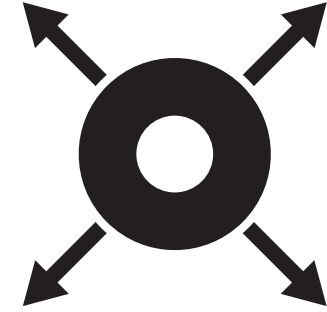


ELIMINATOR



Pinpointing

Once a buried target is identified by a good target indicator or tone response, continue sweeping the coil over the target in an "X" pattern. Make a visual note of the place on the ground where the tone is heard from both directions. Then dig in the center of the "X".



Directions

1. Turn the left knob clockwise to turn the unit on
2. Make sure the elimination knob is clicked to the right, not in battery test mode.
3. Keep the coil parallel to the ground
4. Keep the coil about 1/2" off the ground
5. Use the detector Outdoors Only
6. Adjust sensitivity down if false readings happen often.
6. Some objects like gold and nickel can be eliminated from detection in the middle of the eliminator range.
7. Only the coil and rod are able to be under water. Do not submerge the rest of the unit.
8. Observe all laws (national, state and local) and refill your holes.

DISCLAIMERS

WGI Innovations, LTD is not responsible for damage, expense or injury caused by the unauthorized use of, alterations to, improper connection of and abuse or neglect of the WGI Innovations™ products.

WARRANTY

You must register your product warranty online at www.wildgameinnovations.com. Follow the onscreen directions to complete the process.

WGI Innovations, LTD will replace any product that may encounter material or workmanship defects free of charge for ONE (1) YEAR after the date of purchase and thereafter the cost will vary per incident.

This warranty DOES NOT COVER damage, expense or injury caused by unauthorized repairs, alterations, improper connection, shipping, abuse, theft, accident, neglect or collateral loss.

When returning product for service you MUST obtain a Return Merchandise Authorization (RMA) number from WGI Innovations, LTD. Please include name, UPS address (no P.O. Box), telephone number, RMA number and a complete description of the problem on all enclosed correspondence. When possible, pack product carefully in original carton. Customers are responsible for any shipping cost to WGI Innovations™. WGI Innovations will pay shipping cost of replacement product to the customer. We are not responsible for damage incurred in returning items for repair.

CUSTOMER SERVICE

WGI Innovations, LTD stands behind every product we manufacture for a one year product workmanship warranty and a strong commitment to customer service. If you are in need of customer service for missing parts or need assistance with the operation or assembly of your product, we encourage you to call one of our customer service representatives and let us assist you with your WGI Innovations™ product.

DISCLAIMER

WGI Innovations, LTD reserves the right to make changes to product features, functionality and physical design at its sole discretion. As a result, such changes may not be reflected in this version of the manual.

FCC STATEMENT

Product Name: Metal Detector

Trade Name: Ground EFX

Model# MC1

This device complies with Part 15 of the FCC Rules. Operation is subject to the following two criteria: (1) This device may not cause harmful interference, and (2) This device must accept any interference received, including interference that may cause undesired operation.

Warning: Changes or modifications to this unit not expressly approved by the party responsible for compliance could void the user's authority to operate the equipment.

NOTE: This equipment has been tested and found to comply with the limits for a Class B digital device, pursuant to Part 15 of the FCC Rules. These limits are designed to provide reasonable protection against harmful interference in a residential installation. This equipment generates, uses and can radiate radio frequency energy and, if not installed and used in accordance with the instructions, may cause harmful interference to radio communications.

However, there is no guarantee that interference will not occur in a particular installation. If this equipment does cause harmful interference to radio or television reception, which can be determined by turning the equipment off and on, the user is encouraged to try to correct the interference by one or more of the following measures:

- Reorient or relocate the receiving antenna.
- Increase the separation between the equipment and receiver.
- Connect the equipment into an outlet on a circuit different from that to which the receiver is connected.
- Consult the dealer or an experienced radio/TV technician for help.